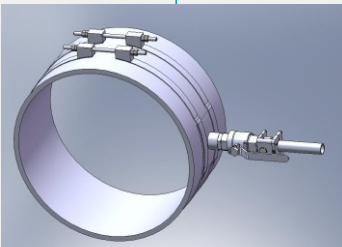


Tapping Saddle

- Quick and easy upgrading
- For use in Ex areas
- For diameters between 100 mm and 1000 mm
- Corrosion-resistant



Tapping saddle for diameters between 100 and 400 mm



Tapping saddle for diameters between 400 and 1000 mm

## Tapping saddle for pipe sensors

Tapping saddle for reliable installation of  $\varnothing 35$  mm pipe sensors in pipe lines.

### Specifications

<b>Tapping saddle for inside diameters from 100 mm to 1000 mm</b>	
Material	stainless steel 1.4301 (V2A), sealing NBR
Connections	with nozzle (inner thread 1 1/2" according to DIN 2999)
Pressure	max. 4 bar

You can find more information in the instruction manual or on [www.nivus.com](http://www.nivus.com)